

iX945GME3

Intel® 945GME μ FC-PGA 478 Core 2 Duo / Core Duo /
Core 2 Solo / Core Solo Mobil CPU Mini ITX Motherboard

Startup Manual

Packing List

Before you begin installing your single board, please make sure that the following parts have been shipped.

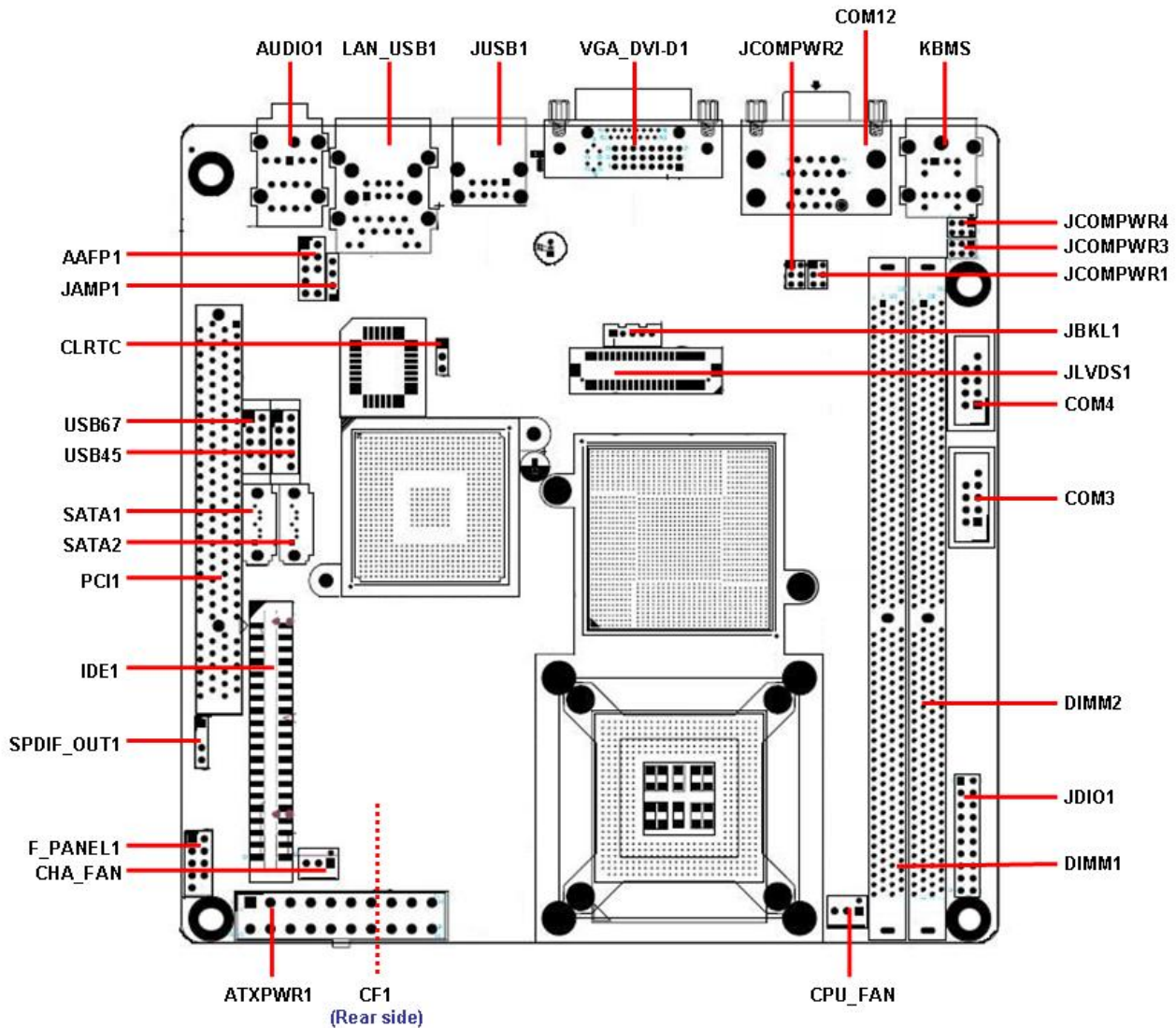
- 1 x Intel 945GME Mini ITX Main board
- 1 x CD-ROM contains the followings:
 - User's Manual in PDF file
 - Drivers
- 2 x COM cable
- 1 x IDE cable (40-pin)
- 2 x SATA cable kit (SATA/Power)
- 1 x Startup Manual

Disclaimer and Notice



The manufacturer reserves the right to make changes, without notice, to any product, including circuits and/or software described or contained in this manual in order to improve design and/or performance. The manufacturer assumes no responsibility or liability for the use of the described product(s), conveys no license or title under any patent, copyright, or masks work rights to these products, and makes no representations or warranties that these products are free from patent, copyright, or mask work right infringement, unless otherwise specified. For the detail product information, please refer to user's manual.

Product Overview



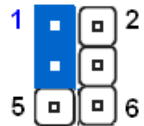
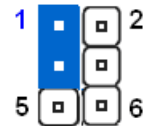
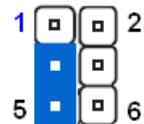
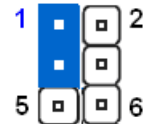
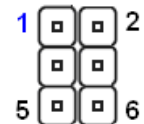
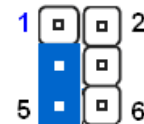


Specifications

System

CPU	Supports Intel μ FC-PGA 478 Core Duo / Core Solo / Core 2 Duo CPU with 65nm process technology
FSB	533/667 MHz
BIOS	Award 8MB Flash ROM BIOS
System Chipset	Intel 82945GME GMCH/82801GHM ICH7-M DH
I/O Chipset	Winbond W83627DHG-A
Memory	Two 240-pin DIMM sockets support up to 4 GB Dual Channel DDR2 533/667 SDRAM
SSD	One CompactFlash Type I/II socket
Watchdog Timer	Reset: 1 sec.~255 min. and 1 sec. or 1 min./step
H/W Status Monitor	Monitoring CPU temperature, voltage, and cooling fan status. Auto throttling control when CPU overheats
Expansion Slots	One PCI slot (PCI Rev. 2.2 compliant) supports 3 PCI master
S3	S3 Support
Smart Fan Control	Yes

I/O	
MIO	1 x EIDE, 2 x SATA, 4 x RS-232 , 1 x K/B, 1 x Mouse (COM1~4 with power output)
USB	8 x USB 2.0
DIO	16-bit General Purpose I/O for DI and DO
Display	
Chipset	Intel 82945GME GMCH integrated Graphics Media Accelerator 950
Display Memory	Intel DVMT 3.0 supports 224 MB video memory
Resolution	2048 x 1536 @ 32 bpp (85 Hz)
Dual Display	CRT + LVDS, or CRT + DVI-D
VGA/LCD Interface	D-SUB + DVI-D
LVDS	Dual-channel 18/24*-bit LVDS
DVI Chipset	Chrontel CH7307C DVI transmitter up to 165M pixels/second
Audio	
Audio Codec	Realtek ALC888 Audio Code supports 5.1+2 CH. with two independent audio stream
Audio Interface	Mic. in, Line in, Line out
Audio Amplifier	TPA3005D2 Stereo 5Watt per channel
Ethernet	
LAN1	Realtek RTL8111B Gigabit LAN

Jumpers			
Label	Function	Note	
CLRTC	Clear CMOS	Normal *	Clear CMOS
			
JCOMPWR1, JCOMPWR2	COM1 RI/+5V/+12V Selection	JCOMPWR1	JCOMPWR2
	+5V (Default)		
	+12V		
	Ring		

Jumpers			
Label	Function	Note	
JCOMPWR1, JCOMPWR2	COM2 RI/+5V/+12V Selection	JCOMPWR1	JCOMPWR2
	+5V (Default)		
	+12V		
	Ring		
JCOMPWR3, JCOMPWR4	COM3 RI/+5V/+12V Selection	JCOMPWR3	JCOMPWR4
	+5V (Default)		
	+12V		
	Ring		
JCOMPWR3, JCOMPWR4	COM4 RI/+5V/+12V Selection	JCOMPWR3	JCOMPWR4
	+5V (Default)		
	+12V		
	Ring		

Connectors		
Label	Function	Note
F_PANEL1	System Panel Connector	